

The Glaciate Falls

for wind nonet

Angela Elizabeth Slater

***The Glaciate Falls* for wind nonet 2016**

The Glaciate Falls was written in late 2016 - early 2017 for the London Consort of winds in collaboration with choreographer Sara Roisland Torsvik as part of a dance project.


This piece explores the idea of water gradually freezing and the energy of its movement changing to still crystallised ice structures. Each instrument has its own material that gradually freeze at different rates, finally solidifying at the close of the work.

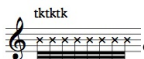
c. 10 mins

Angela Elizabeth Slater

Performance notes:


General:

1) a) x noteheads in staff indicate breath sounds/attacks 

b)  double tonguing on air sounds. Key clicks can be added to enhance the impact of the sound.

c) Gestures on air sounds should generally be played with more freedom and less concern for rhythmic accuracy

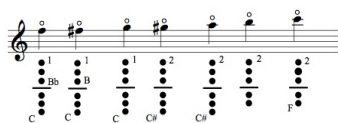
Oboe:

Harmonics are indicated with a 'o' above the note, e.g. 

b) Passages that alternate between harmonic and normal fingerings are indicated with 'o' above for harmonics and 'N' above for normal fingerings. e.g.



3) a) Suggested fingerings for harmonic notes:



* Note: these are just suggestions and the player should feel free to use fingerings that are most reliable for them and their instrument.

Trumpet and Horn

1) Same note tremolos should create a shifting timbral texture achieved by alternating between normal and alternate fingerings.

The Glaciate Falls

Angela Elizabeth Slater

♩ = c. 80 Freely, rapidly flowing wind and water

c.3-4 secs
air *flute turned in
repeat freely gradually getting faster and louder

c.15 secs

c.30 secs

Flute

Oboe

c.5 secs
air repeat freely gradually getting faster and louder

Clarinet in B♭

repeat freely gradually getting faster and louder
air

Alto Saxophone

repeat freely gradually getting faster and louder
c.10 secs
air

Bass Clarinet in B♭

repeat freely gradually getting faster and louder
air

Bassoon

repeat freely gradually getting faster and louder
air

Trumpet in B♭

c.10 secs
air
repeat freely gradually getting faster and louder

Horn in F

repeat freely gradually getting faster and louder
air

Trombone

repeat freely gradually getting faster and louder
when trombone is shortest or longest most effective?
air

♩ = 108 Descending rapidly with fluidity and agitation

4

Fl. *nat.* *mp* *fp* *f* *pp*

Ob. *f* *mp* *mp*

Cl. *air* *f* *mp* *fp*

Al. Sax. *mp* *f* *pp* *f* *air*

B. Cl. *f* *pp* *f* *air*

Bsn. *f* *mp*

Tpt. *air* *mp* *f* *cup mute* *p* *mp*

Hn. *mp* *mf* *air*

Tbn. *mp*

blow air through instrument and wiggle valves on 'S' sound

7

Fl. *f* *p mf* *p mf* *p mf* *p* **A**

Ob. *fp* *f* *p mf* *p mf* *p*

Cl. *f* *p* *mf* *p*

Al. Sax. *mp* *f* *air* *mp*

B. Cl. *f* *air* *mp* *f* *mp*

Bsn. *f* *mp* *f* *mp* *f* *mp*

Tpt. *pp* *fp* *mp* *mp*

Hn. *mp*

Tbn. *f*

blow air through instrument and wiggle valves on 'S' sound

11

Fl. *mf* *bisbigliando* *p* *mp* *fp* *p* *f*

Ob. *p* *f* *mp*

Cl. *mf* *air* *p* *mp* *fp*

Al. Sax. *mp* *f* *pp* *f* *tktktk*

B. Cl. *f*

Bsn. *mp*

Tpt. *fp* *fp* *air* *mp* *f* *fp*

Hn. *air* *mp* *mf* *air*

Tbn. *air* *mp* *f* *mp* *f*

blow air through instrument and wiggle valves on 'S' sound

15

Fl. *pp* *f* *p* *mf* *p* *mf* *p* *mf* *p* *bisbigliando*

Ob. *mp* *fp* *f* *p* *mf* *p* *mf* *p* *pp* *mf*

Cl. *f* *p* *mf* *f*

Al. Sax. *pp* *f* *pp* *p*

B. Cl. *pp* *f* *mf* *p*

Bsn. *pp* *f* *mf* *p*

Tpt. *pp* *fp* *mp* *mp* *fp* *fp*

Hn. *mp* *mf* *air* *air*

Tbn. *mp* *f* *mp* *f*

blow air through instrument and wiggle valves on 'S' sound

19

Fl. *f* *bisbigliando* *p* *fp* *f* *p* *fp* *f* *freely*

Ob. *mf* *f* *p* *fp* *f* *pp*

Cl. *p* *mf* *p* *fp* *f* *p* *freely* *f*

Al. Sax. *mp* *f*

B. Cl. *f*

Bsn. *f*

Tpt. *fp* *fp* *f* *fp* *pp*

Hn. *mp* *f*

Tbn. *mp* *f* *mp*

blow air through instrument and wiggle valves on 'S' sound

23

Fl. *f* *mp* *f* *mp* *f* *mp* *f* *mp* *f* *mp* *half sound* *half sound*

Ob. *pp* *f* *pp* *f* *air* *tktktk* *pp* *f* *air* *tktktk*

Cl. *f* *air* *f*

Al. Sax. *mp < f* *mp* *mp < f* *mp < f*

B. Cl. *f* *mp < f* *mp* *f*

Bsn. *mp < f* *mp*

Tbn. *f* *mp* *f*

*air *flute turned in*

flz.

26

Fl. *mf* *f* *f* *p* *f*

Ob. *mp* *f* *mp* *mp* *f*

Cl. *mf* *f* *mp* *f* *f*

Al. Sax. *mp*

B. Cl. *f* *mp*

Bsn. *mp* *f* *mp*

Tpt. *mp* *f* *mp* *fp*

Hn. *mp*

Tbn.

D

air

nat.

change to harmon mute

blow air through instrument and wiggle valves on 'S' sound

7

30

Fl. *pp* *f* *p* *mf* *p* *mf* *p* *mf* *p* *mf* *p* *mf* *p* *mf*

Ob. *f* *mp* *fp* *f* *p* *mf* *p* *mf* *p*

Cl. *f* *p* *mf* *p* *mf* *p*

Al. Sax. *mf* *p* *mp* *p*

B. Cl. *f* *p* *mf* *p* *mp* *p*

Bsn. *mf* *p* *mp* *p*

Tpt. *pp* *fp* *mp* *mp* *fp*

Hn. *mp*

Tbn.

tr

blow air through instrument and wiggle valves on 'S' sound